

VILLAGE NEWSLETTER

Mangere Bridge Santa Parade Bigger and Better

The Annual Santa Parade at Mangere Bridge Village seems to surpass itself every year, this year was no exception with an estimated 15,000 people lining the street to welcome Santa.

There was an air of expectation as the time drew near for the Parade to commence. Children kept on darting into the middle of the road looking for the flashing lights



and the sound of the Manukau City Pipe Band bagpipes which would herald the start of the Parade.

Led by a Police car with siren going, and a vintage car with the Mayor of Manukau Len Brown on board the Parade proper wound down Coronation Road to the Village.

Groups and Service organisations featured in the Parade included Rotary, Guides, Scouts, Cultural Groups, the SPCA, Manukau Parks, Gym Clubs, the Coastguard, Probus, Touch Rugby Teams, Belly Dancers, a Pony Club, the Mangere Bridge Walking Group, the Fire Brigade, Plunket, the Play Centre, Ambury Farm the Toy Library, the Softball Club, Speedway, the Variety Book Bus, St Johns Youth Division, Mangere Mountain Education Centre, Mangere Bridge Kindergarten, Mangere Bridge School, the Genesis Youth Team, MOTAT, the Police Patrol Car, with of course Santa bringing up the rear.

After travelling through the Village the Parade finally ended up at the Bill and Naomi Park for the after Parade function



Waiting for the crowds to arrive



Joining in the after parade activities



Train rides were popular with the children

What's on at the Bridge

Every Wed	Mangere Bridge Plunket Indoor Bowls Names by 7.20pm Mangere Memorial Hall
Every Thu	Bridge Art Group 9am to Noon Memorial Hall
2nd Sun's	Sunday Walking
Every Wed	Tibetan Buddhist Class 7:30pm
Wed	Brownies 6 - 7.30pm
Mon	Guides 6 - 8pm
Every Mon	CMA Day Care 9:30am - 12:30pm Methodist Church Hall
Mon	W.I. second Monday of the month
Cub Scouts	Wednesdays 5:30-7:00pm 7 ^{1/2} - 10 ^{1/2} years
Kea Scouts	Tuesdays 4.30 - 5.30pm 5 ^{1/2} - 7 ^{1/2} years
Scouts	Thursdays 6.30 - 8.30pm 10 ^{1/2} - 14 ^{1/2} years
Mon/Tue/Thu	Plunket Playgroup 9.00am - 11.30pm
Mon	Plunket Toy Library 11.30am - 12.15pm
Sat	Plunket Toy Library 9.30am - 10.30pm
Mon/Thu	Plunket Car Seat Rentals 12.45 - 2.45pm Plunket Rooms, 5 Taylor Road, M/Bridge
Tue - Thur	Mangere Bridge Walking group 9:00am
Mon, Tues, Wed, Fri	Mangere Bridge Playcentre 9.15am-12.15pm, Domain Road
3rd Wed	R & R Meeting 7.30pm St James Church Hall
Every Fri	Sing-a-long Storytime 10.30am L Library
Mon/Wed	Senior Citizens Housie, 1.00pm Bridge Crt Hall
Mon	St John Youth- every Mon 6:30 - 8:00pm
Wed	Exercise Classes with DYNABANDS Manukau Yacht Club 6.30pm - 7.30pm
Last Tues	Cafe Church at Latin Coffee 7.00pm
Wed	Yoga 6.30 - 8 pm Mangere Mountain Education Centre
Art & Craft	1st & 3rd Saturday of the month Village Sq Market
1st Thu	Senior Citizens Travel Club, Day Trips every first Thursday Phone 634 1062
Daily	Mathematics/Mandarin Tuition Phone 622 2688 or 021 135 0368



The Puppet show drew a crowd each show

Plumbing and Gas Services Ltd

- Plumbing • Drainage • Gas Fitting
- Renovations • Local Friendly Service

Brierly

Phone 622 0446

Mobile 021 872 487

Muir Avenue, Mangere Bridge

Even the dreaded blocked toilet or
leaking roof is no problem
For **FREE** quotes or **FREE** advice
contact your local plumber Ian Brierly

Village Happenings

with Carol Anne

Hello everyone,

Wow! What a fantastic Santa Parade, by far the biggest yet, crowd estimated at 15,000. **Acknowledgements.**

I would like to acknowledge all the participants of the 46 groups that took part in the parade, as well as the Craft, Food stallholders and of course SANTA!

Special thanks go to the following funding organisations for their contributions towards making this the biggest and best Christmas event yet: Mangere Community Board, Four Winds Foundation and the Lions Foundation.

For the smooth running of the event sincere thanks to: Troy, Dave and the Team from Traffic Management NZ, Genisis Youth Team, Brian Pilkington, Lindsay Jones, Les Dixon (Sound and TAB for power), Jim and Rachel for signs, as well as the Maori Wardens. Special thanks to the Harbour Crossing site office for Santa's vehicle.

I am grateful to Merv's Mates from Bridge Park Bowling for rubbish collection as well as the two youths, Harry and Harley who cleaned up the park and assisted me afterwards (*I owe you a pizza guys*) and the Top Dairy and Happy Horse who donated rubbish bags and gloves.

Spot the Shopkeeper Competition

If you're looking for something to do in the New Year, check the photos of some of the shopkeepers, when they were young, displayed on the Notice Board.

Match the the photos with the correct shopkeeper, and pick up an entry from participating shops.

Craft Market In recess during January
Graffiti

Phone 262 5104 as soon as you spot graffiti. The secret is in removing it quickly

Management Office

As I am often out it is best to contact me to make an appointment to meet with me.

Phone: 636 7491, E-mail: mbvillage@maxnet.co.nz.

On behalf of the Business Association may I wish you a Very Happy Christmas, Safe Holidays and Best Wishes for 2009

kind regards *Carol Anne Armitage*
Village Manager

Mangere Bridge Progressive Business Association

Accountant

Kensyl Holdings Ltd - Ken Taylor B.Com.

- Over 30 years experience in accounting, sales and marketing
- Accounting to suit all your needs
- Monthly and/or annual accounting and taxation work
- Long or short term assignments
- Prompt and efficient service

We can work from your office or ours
Located in Mangere Bridge

Confidentiality assured. competitive rates.

Contact Ken Taylor

Phone: 622 2982, Fax: 622 2987

Mobile 027 761 223

email: kensylholdings@xtra.co.nz

SPCA Looks Toward 2009

Community Education

With the end of 2008 nearly upon us, the Auckland SPCA is now accepting bookings from schools and community groups for 2009. Their Education team prides itself in teaching others about animal welfare related issues, caring for animals and the role of the SPCA within the community. Encouraging empathy, respect and understanding towards animals, humans and the environment we all share. If you would like to find out more information on the services they provide or to book a session to visit the Auckland SPCA or to have an SPCA Educator visit you, please contact Krystle Harborne on (09) 256 7300 extn 725 or krystle.harborne@spca.org.nz

School Holiday Experience

Join the Auckland SPCA during the January school holidays to learn more about your favourite animals. They are now accepting bookings for their January sessions. Please see the details below for times and dates:

January 2009 Dates: Time Topic Age Group
Monday 12th 10am – 1pm Curious About Cats 7 – 12 years

Tuesday 13th 10am – 1pm Dog Tails 7 – 12 years

Wednesday 14th 10am – 1pm Animal Careers 9 – 14 years

Thursday 15th 10am – 1pm Small Furry Friends 7 – 12 years

Monday 19th 10am – 12pm Young Pet Carers 5 – 7 years

Tuesday 20th 10am – 1pm Curious About Cats 7 – 12 years

Thursday 22nd 10am – 1pm Dog Tails 7 – 12 years

MY&MB Club to Host Hartley 16 Nationals

14-18 January Manukau Yacht & Motorboat Club are hosting the Hartley 16 Nationals. The event this year is being sponsored by IRL (Industrial Refrigeration Ltd). They are looking forward to the largest turnout of Hartley 16's seen for some years.

Friday 23rd 10am – 1pm Animal Careers 9 – 14 years

Spaces are limited to 12 per session so book early to secure a place. Cost is \$30 per session, book by the 19th of December to receive a special earlybird rate of \$25.

For further information or to place a booking, please contact Haley Easterbrook on (09) 256 7312 or haley.easterbrook@spca.org.nz

Security measures over Christmas

With Christmas & New Year just around the corner it is important that you start thinking about security measures, both for your business as well as at home.

Icon have recently received Police statistics that show a significant increase in reported crime through South Auckland and in particular, the Manukau area. However they are glad to report that the Mangere Bridge area shows very few incidents and those are mainly vehicle and residential property related.

If you are going away over the holidays, there are some simple security steps that Icon recommend you follow:

If you have an alarm system, ensure that it is correctly set and provide your monitoring company with appropriate contact details.

Arrange for mail to be collected on a regular basis by family or friends.

Ensure that all doors, windows and access points are secured and do not leave tools, ladders etc lying around that may facilitate entry. Leave your property looking 'lived in' – consider leaving several lights on or using timers. The team at Icon wish all a safe and happy Christmas and New Year.

Copy Deadline for February 2009

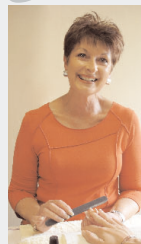
Deadline for the February Issue is the 21st January 2009. To ensure that your article makes the February issue fax copy to 636 6096 or post to 6 Conifer Lane Mangere Bridge. We cannot guarantee a definite delivery time for the Village Newsletter, however we will do our best to have it delivered before the advertised upcoming events

SUE'S FOR

Beauty

Hairdressing
Facials, Waxing
Manicures & Pedicures
Lash & Brow Tinting
St Tropez Tanning

Make up for that
Special Occasion



SUE TYLER

Tel: 634 2980, Mob: 021 286 4466, 19 Andes Ave Mangere Bridge

LOOK!!! LOOK!!!

A+CUTS

- ✓ Free Quotes
- ✓ Competitive Price
- ✓ Excellent Work

- Hedges
- Gardening
- Tree trimming
- Section Clean ups
- Onchunga Weed Spraying
- House and Spouting Cleaning

Ph Chris Lockett

636 4929 or Mobile 021 259 5516

66 Kiwi Esplanade, Mangere Bridge

Mangere Historical Society

Foundation Member recalls the War years in Holland

The Mangere Historical Society met on November 17th in the Historical Selwyn Church for a meeting of Carol singing to celebrate the fast approaching Festivities.

Bryan Belcher was presented with the Community Cup in acknowledgement of his many years of loyal membership and the untold tasks that he has taken on for the Society. His wonderfully restored vintage vehicles always form a big attraction for those who visit his home to see his huge collection of memorabilia.

Nel Colyn who is a foundation member of the Society spoke of her teenage years in the Netherlands under the German tyranny of WWII. She remembered watching the Paratroopers descending from the sky and noticing they all held pistols in their hands. Rotterdam was heavily bombed leaving those distressed people having to walk away with their bicycles piled up with any possessions that they could gather.

With the Government capitulating - radios were collected - it was a punishable offence to listen to the BBC - ration cards were allocated and soup kitchens established until there was nothing left to make the soup. Any good food went for the Germans use. Coins were replaced with paper money worth very little. All copper and brass was meant to have been handed in although some families buried theirs in the back yard. No soap was available for washing of bodies or clothes so everything took on a grey tone. As their clothes wore out there was nothing to replace them.

ONEHUNGA MANGERE UNITED ASSOCIATION SPORTS CLUB

A.G.M.

Sunday 14th December 2008 at 2.00 pm,
at the Clubrooms, Domain Road,
Mangere Bridge

If you have any enquiries: or require
information contact the Secretary - Peter
Judd Ph 6340675 peter.judd@xtra.co.nz

Nel recalled making overalls for her brothers from a tent that they had used when they went to the beach in earlier times. The cotton thread was poor and forever breaking and it was a test of patience and handwork to stitch material together satisfactorily.

Bikes were the only transport and the rubber tubes perished and were filled with small blocks of wood that clattered as they turned. Personal passes were required and checkpoints, curfews and blackouts applied to everyone.

Slowly the Jewish people disappeared from the streets. Windows were heavily taped to stop them from shattering.

After many years of these depressing conditions, Nel remembered the excitement learning of D-day and the Canadian forces who came and occupied a nearby village. The tenacity of these brave people was astonishing and it made those listening to the story realise how fortunate they had been living in New Zealand.

Nel and her family came to enjoy the peace and freshness of life in Mangere in 1952.

St Vincent De Paul Shoppe Thanks Bridge Community

The St Vincent de Paul Shoppe at the Bridge celebrated its 10th anniversary in September.

During those ten years the Society has been able to assist scores of needy in the community. This work has only been possible by the support and generosity of the local community. For this the Society says "Thank You"

The money generated from the shop has enabled the Society to assist some cases financially as well as enable them to purchase items that are infrequently given, items such as whiteware etc.

Recently the Society opened a Centre at 47 Station Road in Otahuhu, phone 270 4088 which in addition to helping the needy with material things is also able to offer assistance with other problems that they may face.

St James' Church Christmas Services

Christmas Services at St James Anglican Church .29 Church Road Mangere Bridge.

Nine Lessons and Carols Service

14th Dec at 7.30 pm

Join with the St James Singers to share in this lovely service.

Christmas Eve Midnight Service

24th december at 11.30 pm start

Service with Carols Candlemass First Communion for the Christmas season

Christmas Day Service

25th December at 9.00 am

Celebration Service with Holy Communion

Candlelight Service in the Mangere Bridge Village

18th Dec be there at 7.30 pm

Carols on the Green in the Village (Bill and Naomi Kirk Park)

Bring a candle or a torch, a blanket to sit on. Something to eat and drink

And share in this community carol singing service.

Watch the weather and bring a brolly or coat if required

C.A.B Looking for Volunteers

The Mangere Citizens Advice Bureau is seeking Volunteers to attend the Basic Training Course starting February 2009.

Anyone interested in helping members of the Mangere community by providing free impartial and confidential information and support at the CAB is invited to visit the Bureau, which is situated behind the library at the Mangere Town Centre, or you can call 09 275 6885 for a chat about Volunteering at the Mangere CAB. The Bureau is open Monday to Friday from 9am- 4pm

Stepping Stones To Optimum Health

STONE CHIROPRACTIC

Dr Trevor A.H.Stone, D.C.
Over 20 years experience



1 Waterfront Road
Mangere Bridge
Auckland
New Zealand
Phone (09) 622 1540

BRIAN'S LAWNMOWING

Mangere Bridge



Regular Reliable Service
Phone Brian or Carol on 636 4391
or leave a message

REPAIRS

24 hr Service

zips, hems, pockets etc.

Joan

Phone 636 9498

Miro Road
Mangere Bridge

What Is Domestic Violence?

Domestic violence is an abuse of human rights. Domestic violence in New Zealand is a significant social issue. Violence takes many forms. It is unacceptable whenever it happens. Violence by a family member who is loved and trusted can be particularly devastating. Domestic violence is **not only** physical abuse; it can also be psychological or sexual abuse.

Domestic Violence is covered by the Domestic Violence Act 1995. Under this act a person who is a victim of domestic violence can apply to the Family Court to have a Protection Order. This applies to people who are in a "domestic relationship". It covers married couples as well as de facto and same sex relationships. It doesn't cover work situations or landlord/ tenants or most flatting situations.

How do I get an order?

If it's URGENT and the person applying might be at risk of harm or might suffer hardship, you can apply for the order *without notice* to the violent person. In that case the Judge decides whether to make the order immediately or not.

If there is no such risk of harm then you can apply *on notice* by giving the violent person notice.

If the violent person opposes the order being made, it will then be set down for a hearing before a Judge to consider whether an order should be made.

What is protection order?

A protection order is a legally enforceable order made by a Family Court judge and it puts conditions on a violent person to protect the applicant from domestic violence. Protection orders automatically cover children in the applicant's family. Protection orders can apply whether the parties are living together or separately.

They contain non- violence and non-contact conditions.

NON-VIOLENCE CONDITIONS: Apply whether the parties are living together or not. They say that the person who has used domestic violence ("the respondent") must not physically or sexually abuse the protect person or threaten to do so, damage or threaten to damage their property, use psychological abuse against the protected person, or encour-

age others to do these things.

NON CONTACT CONDITIONS: must not (prohibit) the respondent from making any contact with the protected person. Prohibited contact includes that the respondent must not go to the other person's home, workplace, school, Follow, harass, hang around, write or phone the victim.

You can also get Court orders allowing you to stay in the home or retain the family furniture etc for your use. These are called occupation and furniture orders.

The Police are given a copy of the Protection Order and if the respondent breaches the terms of the order, the Police can be called and the respondent arrested and charged with a criminal offence.

If you would like further information or advice in any area of Family Law call the Mangere Community Law Centre: (09)275 4310

If you are interested in learning more about the law and your rights you are invited to attend our eight week "LAW IN OUR COMMUNITIES PROGRAMME" which will be held on the following dates for 2009; February 11- 01st of April, 06th of May - 24th of June, 22nd of July-09th of September, 15th of October- 03rd of December 2009 at Mangere Community Law Centre.

Webtastix Webhosting and all those involved with putting it together and delivering it to

you

wish each and everyone a

Merry Christmas

and Bright and Prosperous

New Year



Te Kaunihera o
MANUKAU
City Council

Mangere Community House Programmes

Whare Koa (MCC Operated) MCC
141 Robertson Road, 275 4920

The Mangere Community House will be closed from the 19th December to the 20th of January 2009.

Tai Chi Wednesdays 1.30-2.30 Gold Coin
Learn English - improve your English for work or to be able to read to your children All Levels Ph Joanna 275 4920

In House Counselling Friday am Ph 277 5337 to make an appointment.

Games Morning Scrabble, Thursday 10.00-11.30 all welcome

Driver Licence Beginners, Restricted, Full & HT \$30

AA Aroha Sundays 7.00pm Ph 636 8281

Al Anon Wednesdays 10.00am

Parent Trust - Being the Mother you Want to Be

This 2009 8 week for programme is led by friendly, supportive and experienced group of facilitators who help mums explore some of these stresses and find strategies to make parenting even more enjoyable ph 376 0400

Presentations from WINZ; Working for Families, Welcome Home, and Mangere Community Law.

B4 School Checks ph 0800104 105 for an appointment.

Mirimiri Clinic ph 275 4476/2570142 to make an appointment

Rooms for Community and Private hire. Community office space for hire

Please view our website or phone Joanna 275 4920 for more information on any of the above.

Developing programmes to meet the needs of the community, we welcome your ideas, please give us a call.

www.manukau.govt.nz

Keywords community houses

ELECTRI CALL LTD I need you!

*We pride ourselves on prompt
courteous service*

Ray Williams

Unit G,
45 Hastie Avenue
Mangere Bridge,
Phone 636 5031

CAR PROBLEMS?

- Prompt Service
- Reasonable rates

Kevin Smith

Smith's Auto Services,
7 Claesholm Pl, Mangere Bridge

for all mechanical servicing
or electrical solutions.

Give me a call on

634 2586

or **0274 990 651**

JOHN'S CAR VALET SERVICES

*Have your car sparkling
from just \$50.00*

Mobile Car Valet Services
Mangere Bridge

**Phone 09 636 6114
or Mobile 021 825 381**